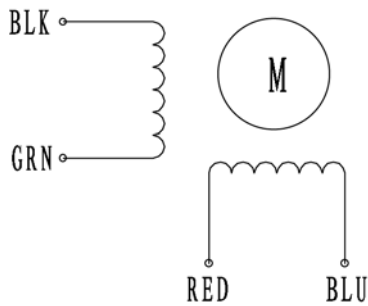


HIGH TORQUE HYBRID STEPPING MOTOR SPECIFICATIONS

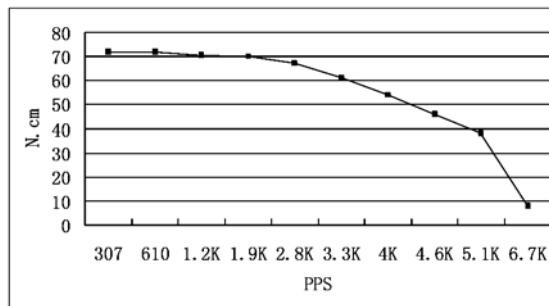
| General specifications | | Electrical specifications | |
|-------------------------------------|------------------------------------|--|------|
| Step Angle (°) | 1.8 | Rated Voltage (V) | 2.52 |
| Temperature Rise (°C) | 80 Max (rated current, 2 phase on) | Rated Current (A) | 2.8 |
| Ambient Temperature (°C) | -20~+50 | Resistance Per Phase ($\pm 10\%$ Ω) | 0.9 |
| Number of Phase | 2 | Inductance Per Phase ($\pm 20\%$ mH) | 2.5 |
| Insulation Resistance (M Ω) | 100 Min (500VDC) | Holding Torque (N.cm) | 126 |
| Insulation Class | Class B | | |
| Max. radial force (N) | 75 (20mm from the flange) | | |
| Max. axial force (N) | 15 | | |

● Wiring Diagram :



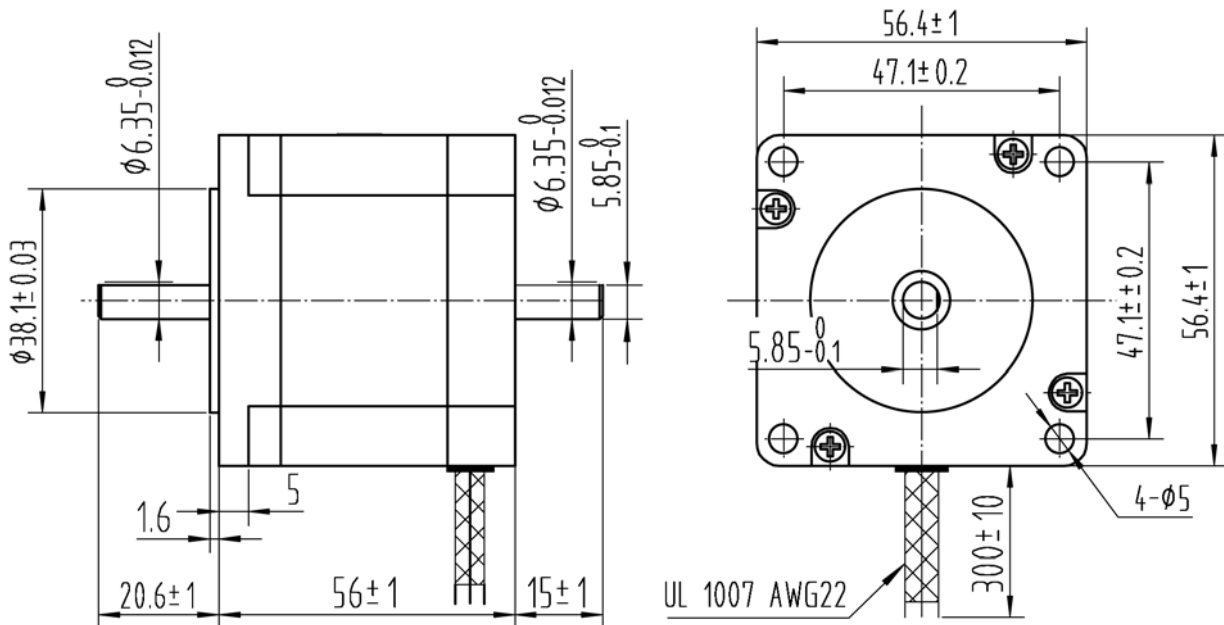
● Pull out torque curve :

VOLTAGE: 30VAC, CONSTANT CURRENT: REF2.8, HALF STEP



● Dimensions:

(unit=mm)



| | | | | | | |
|---------|------------|-------------|----|------|---------------|----------------------|
| | | | | | T57H56-2804B | TECHNICAL CONDITIONS |
| REV | REVISIONS | DESCRIPTION | BY | DATE | Tiny Controls | 080056100 |
| DRAW | 2014/10/21 | | | | | |
| CHECK | | | | | | |
| APPROVE | | | | | | |