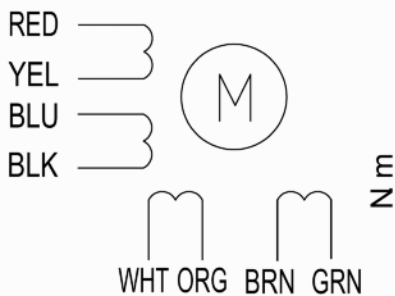


HIGH TORQUE HYBRID STEPPING MOTOR SPECIFICATIONS

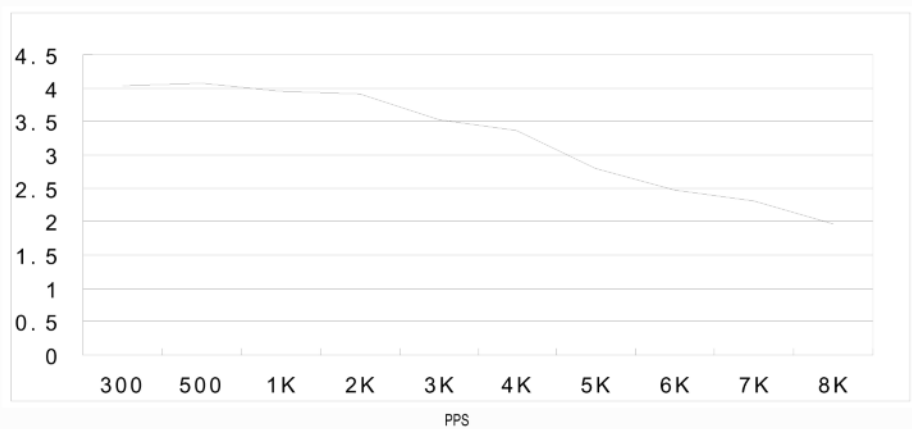
General specifications		Electrical specifications	
Step Angle (°)	1.8	Rated Voltage (V)	3.78
Temperature Rise (°C)	80 Max (rated current, 2 phase on)	Rated Current (A)	4.2
Ambient Temperature (°C)	-20~+50	Resistance Per Phase ($\pm 0\% \Omega$)	0.9 (25°C)
Number of Phase	2	Inductance Per Phase ($\pm 20\% \text{mH}$)	6
Insulation Resistance (M Ω)	100 Min (500VDC)	Holding Torque (N.m)	8.7
Insulation Class	Class B	Detent Torque (N.m)	0.24
Max.radial force (N)	220 (20mm from the flange)	Rotor Inertia (g. cm ²)	2700
Max.axial force (N)	60	Weight (Kg)	3.86

● Wiring Diagram:

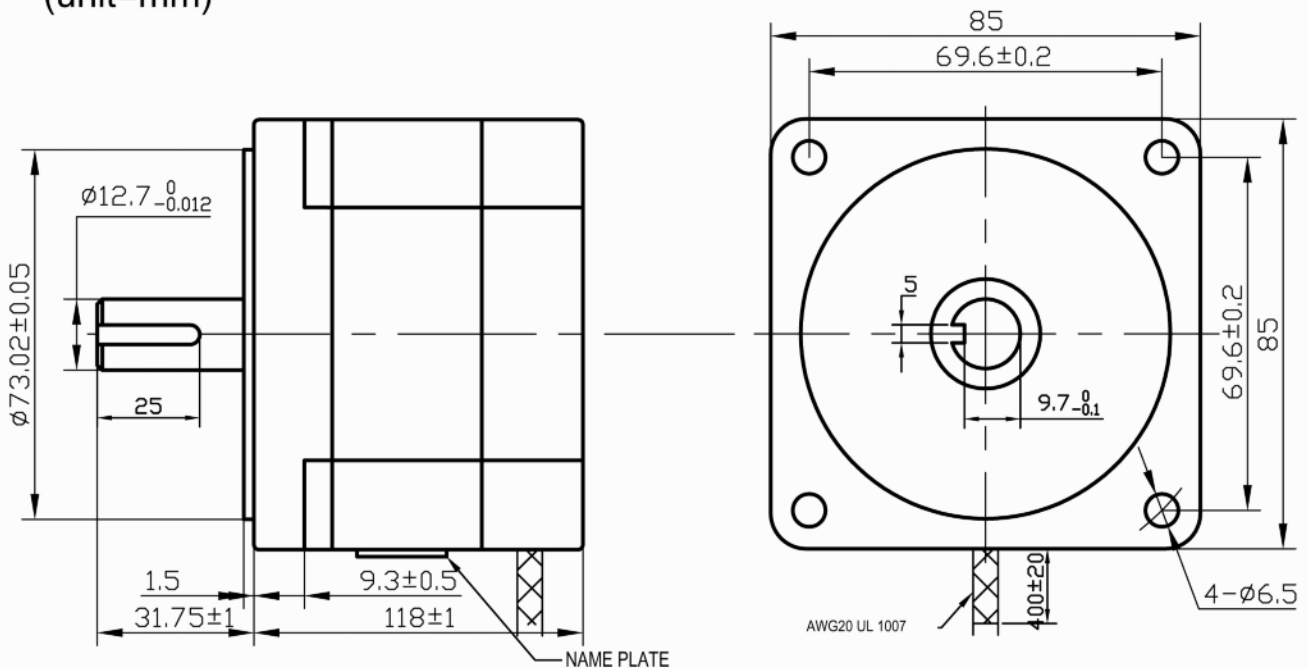


● Pull out torque curve:

VOLTAGE: 110VAC, CONSTANT CURRENT:4.2A, HLAF STEP



● Dimensions: (unit=mm)



△					T85H118-4208	TECHNICAL CONDITIONS
△						
REV	REVISIONS	DESCRIPTION	BY	DATE		
DRAW	2009. 06. 30					
CHECK						
APPROVE						110118001